

# ELITE VALLEY

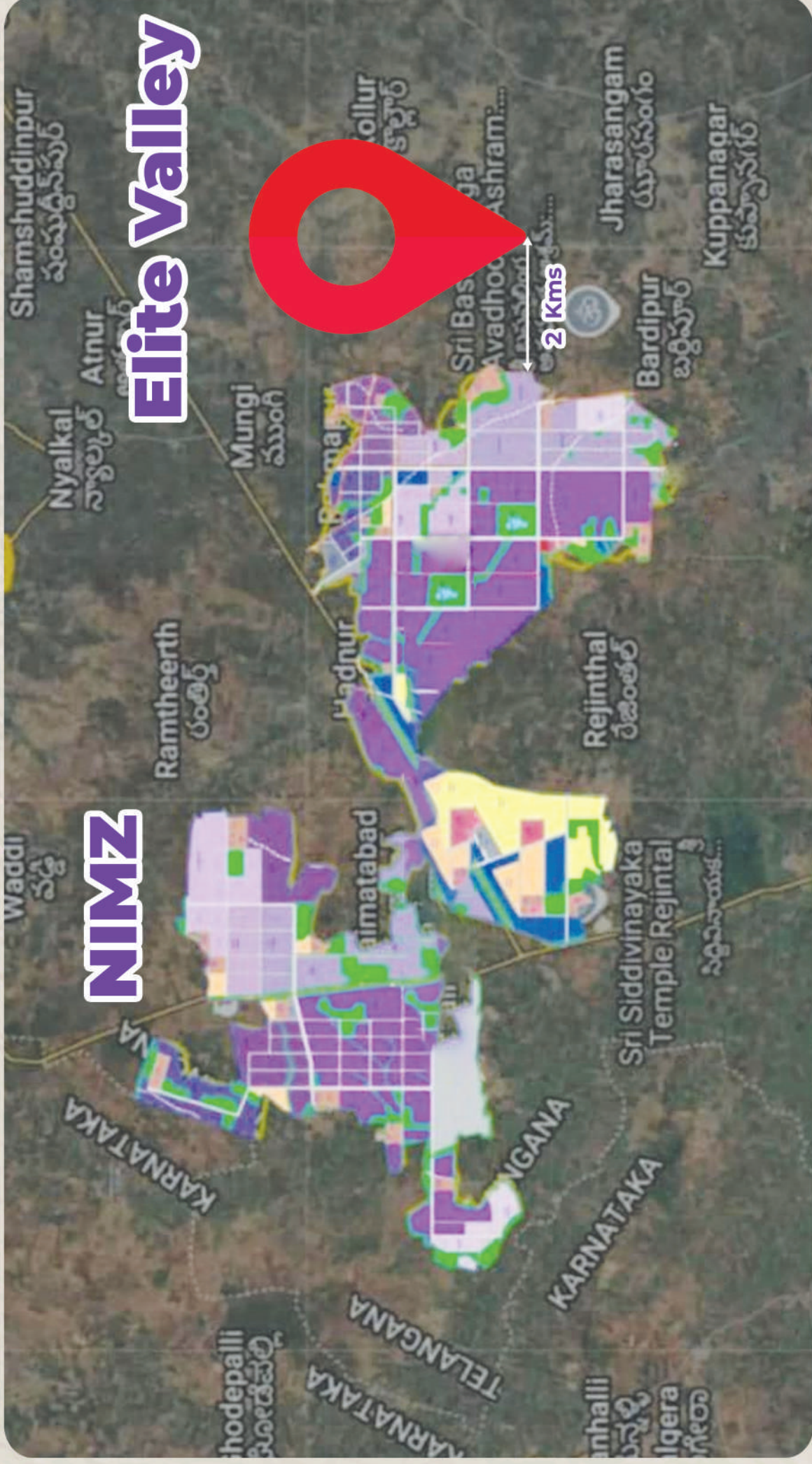
THE FUTURE IS YOURS

₹11,000/-  
**₹9,500/-**  
Per  
Sq.yd Only...



"Elite Valley is a Perfect gateway to smart investments & for a brighter future - strategically located between the NIMZ (World-Class Eco System) 12,635 Acres & The sacred Ketaki Sangameshwara Temple (Dakshina Kashi)."

Elite Valley : Secure your Piece of Land in a High-Growth Zone.



# PROJECT AMENITIES



Entrance Arch



Park



Water Facility



Underground Drainage



Avenue Plantation



Children Play Area



Compound Wall



Black top Roads



Electricity



Street Lights



Security

Elite Valley is an Exclusive Open Plots Venture Situated in Fast-Developing Corridor of Telangana, Surrounded by High-Value Developments Promising you a Steady price Appreciation of Your Investments.

Elite Valley's proximity to NIMZ and other Thriving Developments in this Region, Ensures you a Strong Growth Potential and long-Term Value of your Asset.

“ To Secure your Financial Future, Elite Valley is the ideal choice for optimal returns and for a Bright future.”

## LOCATION HIGHLIGHTS

- ❖ 2 Mins Drive From Ketaki Sangameshwara Temple.
- ❖ 5 Mins Drive From NIMZ.
- ❖ 12 Mins Drive From Zaheerabad.
- ❖ 20 Mins Drive From Mahindra Plant.
- ❖ 30 Mins Drive From Woxsen University.
- ❖ 50 Mins Drive From Regional Ring Road.
- ❖ 55 Mins Drive From IIT Kandi.
- ❖ 1 Hr 5 Mins Drive From Githam University.
- ❖ 1 Hr 20 Mins Drive From ORR.
- ❖ 2 Hr Drive From Rajiv Gandhi International Airport.



**SCAN HERE  
FOR SITE LOCATION :**



### **SITE DETAILS :**

JHARASANGAM VILLAGE & MANDAL,  
ZAHEERABAD, SANGAREDDY DISTRICT,  
TELANGANA

### **OFFICE ADDRESS**

1-65/2/218, THE SQUARE BUILDING, 3RD FLOOR, PLOT NO-218, ROAD NO-5,  
AVENUE -2, KAKATIYA HILLS, MADHAPUR, HYDERABAD, TELANGANA-500081.

**Contact us :**