

AMENITIES



MULTIPURPOSE CLUB HOUSE



CHILDREN'S PLAY AREA



CAR PARKING



SPORTS FACILITY



24/7 SECURITY



LANDSCAPED GARDENS



INTERCOM



POWER BACKUP




CRICKET NETS



“ With a passion for sustainability, The Rock Infra Constructions is committed to developing buildings that are both luxurious and environmentally conscious. ”



RECEPTION




SWIMMING POOL



BANQUET HALL



GYMNASIUM



INDOOR GAMES
(Billiards, Carrom, Table Tennis, Shuttle Courts etc.)

LOCATION HIGHLIGHTS

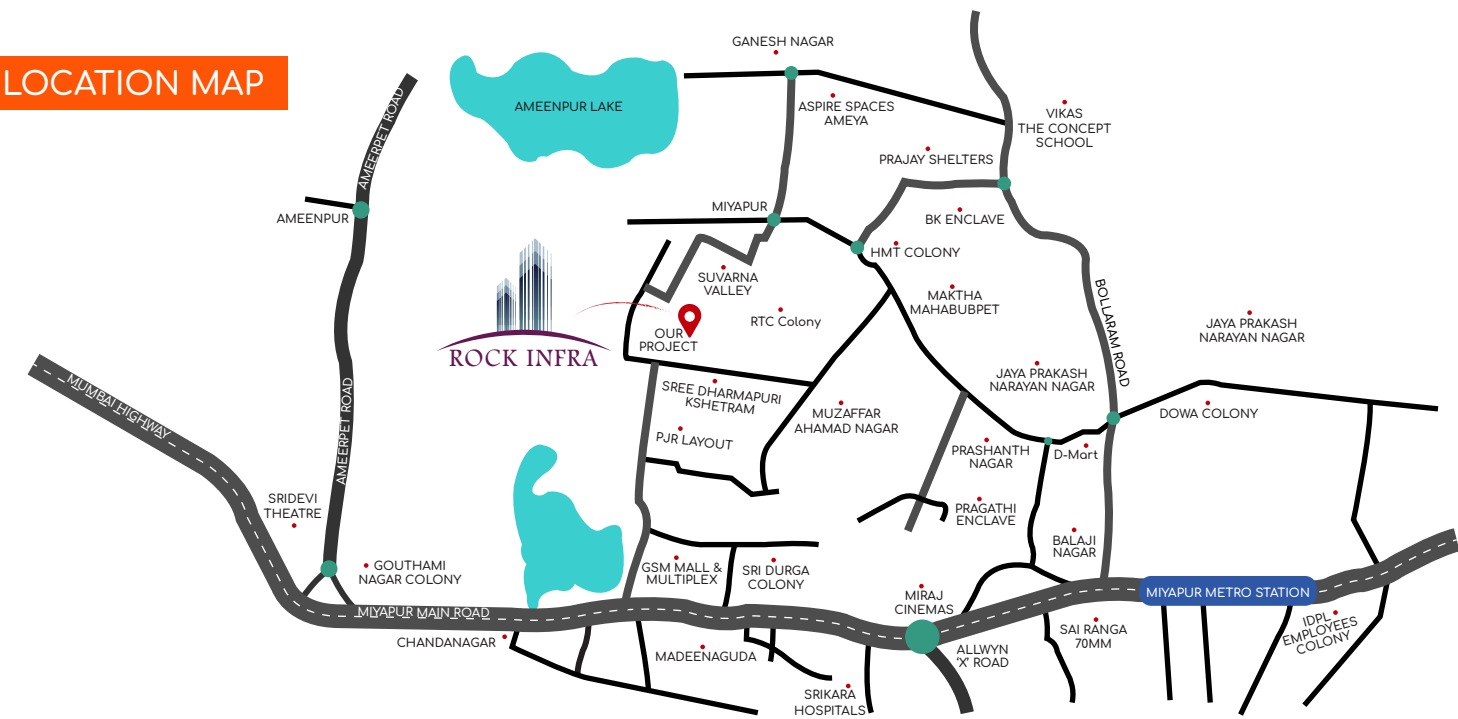
- Less than 1.5 KM proximity from main road.
- All are premium 3BHK with high ventilation and all flats are corner flats with 3 side open area with park and road side view.
- Highly elevated area.
- Nearby schools, Colleges and Hospitals.
- 20 Min Drive to Hi-Tech city / Gachibowli and Financial district.
- 10 Min Drive to Miyapur Metro Station and Lingampally Railway station.
- Future Metro Rail expansion till BHEL.
- School Buses from Phoenix Greens, Ambitus, Global Edge, Delhi Public School, Epistemo Global, Geetanjali, etc.

for More Details Visit www.therockinfra.com

“ Our vision is to establish a mark as a leading real estate firm in India. Building residential spaces that stand up to the test of time. ”



LOCATION MAP



Development by

ROCK INFRA



Architect & Structural Consultants

Zaki and Associates



MEP Consultants

Synergy Infra Consultancy India Pvt Ltd



Address
Plot No 35, 3rd Floor, Jayabheri Pine Valley, Lane beside Care Hospital, Gachibowli, Hyderabad, Telangana - 500 035

Contact Us
720 720 2228



We Create Quality Life Spaces

Rock Infra Constructions entered the real estate sector of Hyderabad City in 2016 and since then, we have created a legacy of innovative and futuristic landmarks. We have built residential spaces in Hyderabad. We are constantly motivated by our mission to conquer new heights and achieve significant milestones of success. We take pride in the quality of our construction and on-time project deliveries and strive to surpass the set standards. We believe in listening to our customers and their satisfaction forms the core of our services. We are a group of diverse and highly knowledgeable professionals with over a decade of experience in Real Estate. The Rock Infra Constructions is one of the real estate developers in Hyderabad and is committed to ethical practices and building uncompromised spaces for a harmonious lifestyle.

Floor Plan

SPECIFICATIONS

Super Structure

- Earthquake resistant with R.C.C. FRAMED STRUCTURE with high yield TMT Steel bars of ISI.
- 8" AAC/Cement/Red blocks work for external walls & 4" AAC/Cement/Red blocks work for Internal walls.

Plastering

- INTERNAL: Double Coat Cement Plaster of 12 mm thick with Smooth Finishing.
- EXTERNAL: Double Coat Sand Faced Cement Plastering Of 20 mm Thickness.

Painting

- INTERNAL: 2 coats of good quality Luxury emulsion paint over putty finished surface/ primer coat.
- EXTERNAL: Texture finish and weather-proof emulsion paints based on the finalized elevation.

Flooring

- Drawing, Dining, living : 800 x 800 mm size double charged vitrified tiles of reputed make with spacer joint.
- Bedroom, Kitchen : 600 X 600 mm size double charged vitrified tiles of reputed make with spacer joint.
- Bathrooms : Ceramic tiles cladding up to lintel height.
- Balcony/Bathroom/Utility : Anti-skid vitrified/ceramic tiles of reputed brand.
- Corridors : Aesthetically Vitrified tiles / Granite.
- Staircase : Natural stone/Granite.

Windows / Grills

- All windows are of aluminum alloy UPVC glazed sliding openable shutters with EPDM gaskets necessary hardware with MS grill and provision for mosquito shutter.

Doors

- Main Door : 8 Feet height Main door. Hard wood frame, finished with melamine spray polish, Teak finished flush shutters with reputed hardware.
- Internal Door : Hard wood frame or factory made wooden frame with both sides laminated flush shutter with reputed hardware.
- Bathrooms/Utility door : Granite frame with both sides laminated flush shutter with reputed hardware.
- Balconies : Aluminum/UPVC glazed French sliding doors with mosquito mesh provision.

Bathrooms

- Premium quality ceramic Wash Basins of reputed brand (Jaquar, Hindware, ROCA are Equalent).
- Premium quality wall mounted EWC of reputed brand.
- Premium quality Concealed Flush Tank of reputed brand
- Premium quality single lever C.P fittings of reputed brand
- Provision for geysers in all Bathrooms

Kitchen/Utility

- Municipal and bore water connection.
- Provision for water purifier.
- Provision for exhaust Fan.
- Provision for washing machine / drier, wet area for washing utensils etc.

Water

- Adequate Bore wells in project and provide water supply to all Flats 24 Hours.
- Dedicated Municipal water pipelines to entire project and Municipal water connection to every flat with 24 Hours Supply.

Electrical

- Concealed copper wiring of reputed make.
- Power outlet for air conditioner in all bedrooms and living.
- Power outlets for geysers in all bathrooms.
- Power outlets for chimney, Hob, refrigerator, microwave oven, mixer/grinder in kitchen.
- Washing machine point in Utility area.
- 03 phase supply for each unit.
- Miniature Circuit Breakers (MCB) (Legrand) for each distribution board of reputed make.
- Modular switches of reputed make. (Legrand/Havells/GM)

Lifts

- High speed automatic elevators with V3F for energy efficiency of Reputed make. (Schindler)
- Lift lobby cladding with vitrified tiles/granite.

TV / Telephone /Internet

- Fiber to the home with Wi-Fi, Internet, DTH, telephone and Intercom.
- Telephone point Drawing & master bedroom (with CAT6).
- Television points & Internet: All bedrooms, drawing & living (with CAT6 & RG6).

Water Proofing

- Waterproofing shall be provided for bathrooms, roof terrace and utility area.

Security

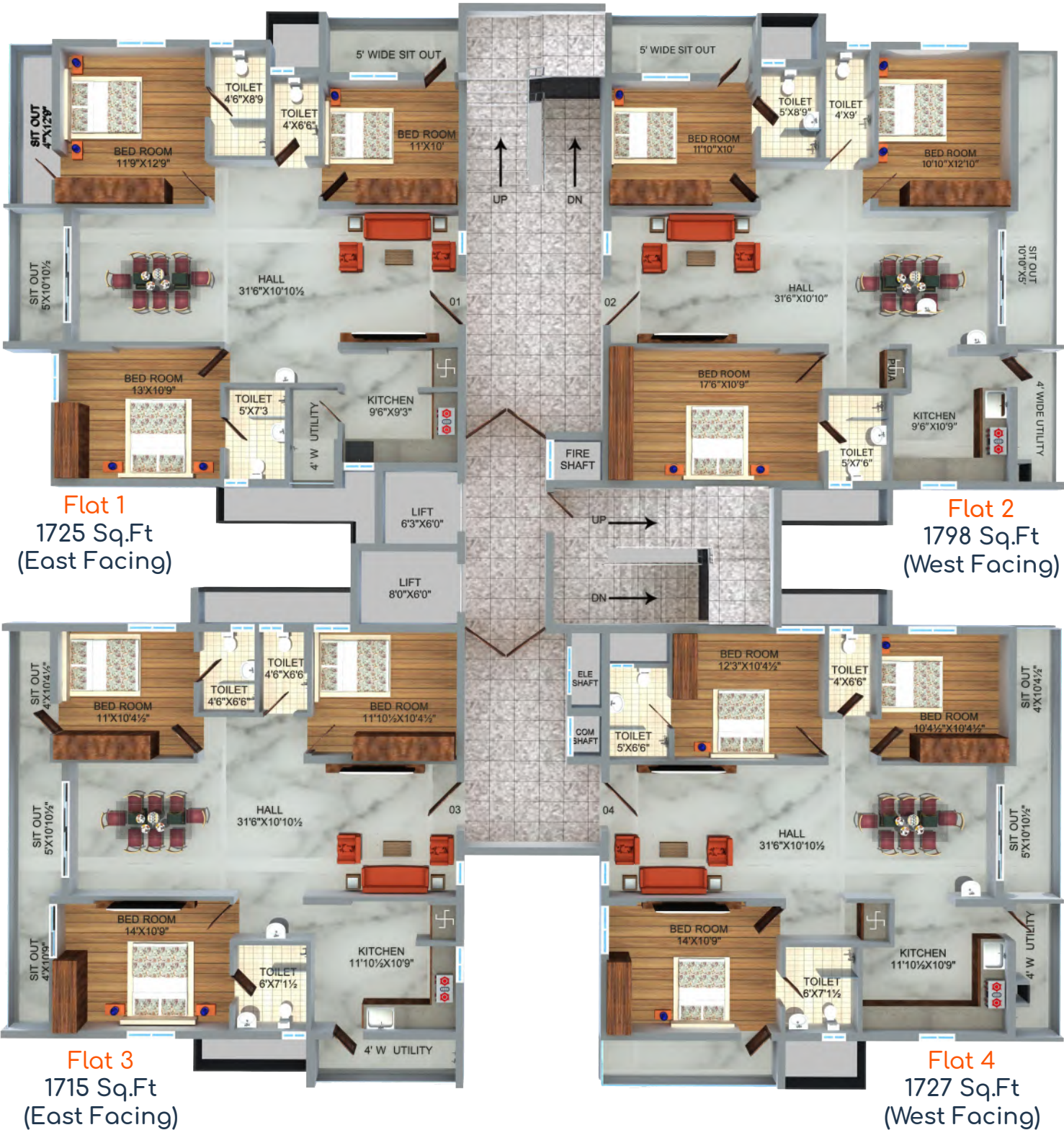
- Intercom facility to all units connecting Security.
- Comprehensive security system with cameras in appropriate locations.

Power Backup

- 100% DG Back up except AC's.
- Backup/Redundancy for lifts.

WTP / STP

- A Sewage Treatment Plant of adequate capacity, as per norms will be provided inside the project.
- Treated sewage water will be used or the landscaping and flushing purpose.



C+S+12 Floors
Each Floor 4 Flats
3 BHK : 1715 sft - 1798 sft
(Over 57% Open Area)

“We want to create communities where people can discover pure peace and comfort and a family can enjoy and bind together.”



“Safety is important as it affects an individual's well-being. A safe and secure environment for you and your family is our utmost priority.”